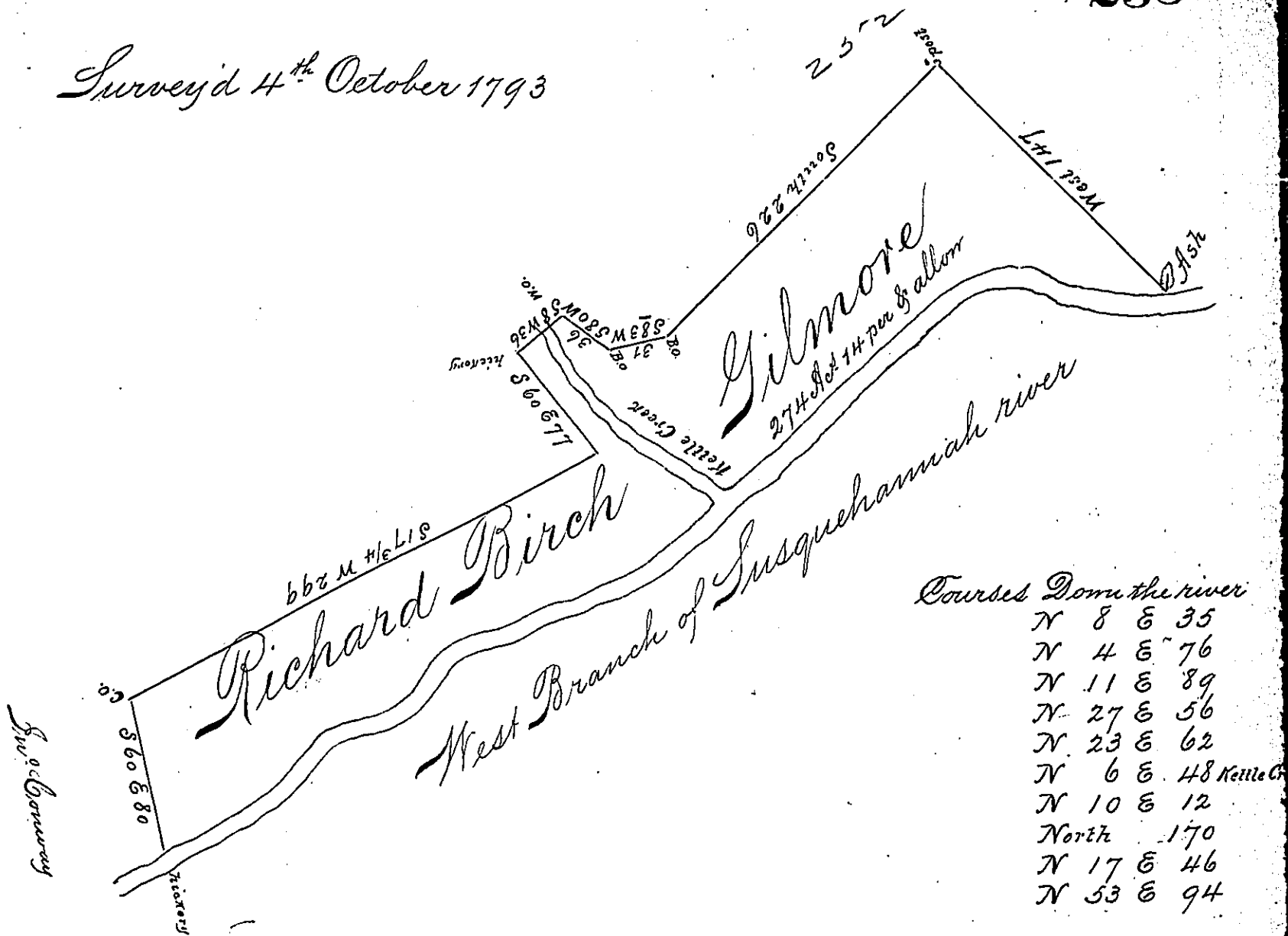


Survey'd 4th October 1793



Survey'd the above Described Tract of Land on the 4th day of October 1793 to Richard Gilmore, in pursuance of his preemption Warrant Dated 21st day of July 1785. Situate on the mouth of Kettle Creek Joining Land of Containing Two hundred Seventy four Acres & fourteen perches & allowance of Six per Cent &c

To Daniel Broadhead, Esq^r }
Surveyor General }

I Certify the above to be a true Copy of Draught found in my office

John Batten D.S.

IN TESTIMONY that the above is a copy of the original remaining on file in the Department of Internal Affairs of Pennsylvania, made conformably to an Act of Assembly approved the 16th day of February, 1833. I have hereunto set my Hand and caused the Seal of said Department to be affixed at Harrisburg, this

Seventh day of January 1896

James W. Latte
Secretary of Internal Affairs.